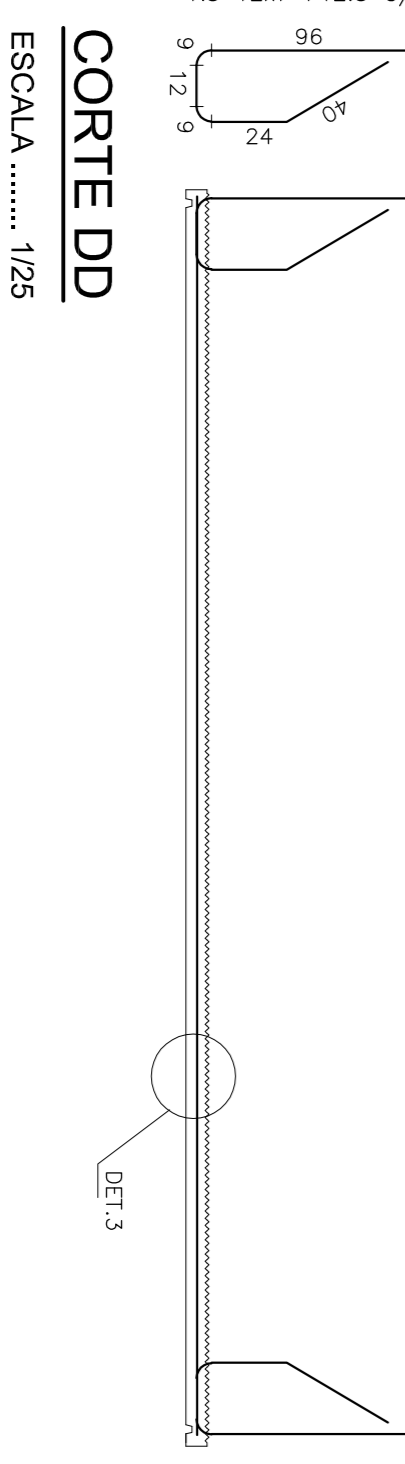
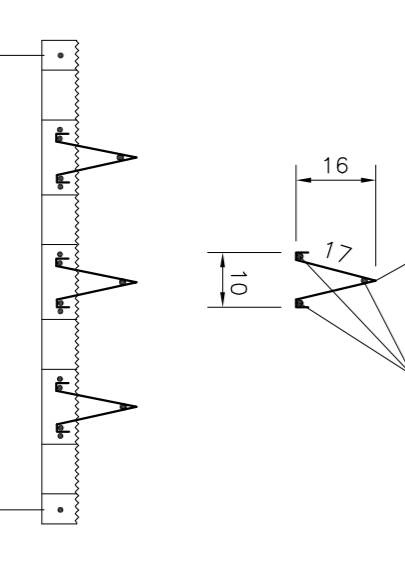
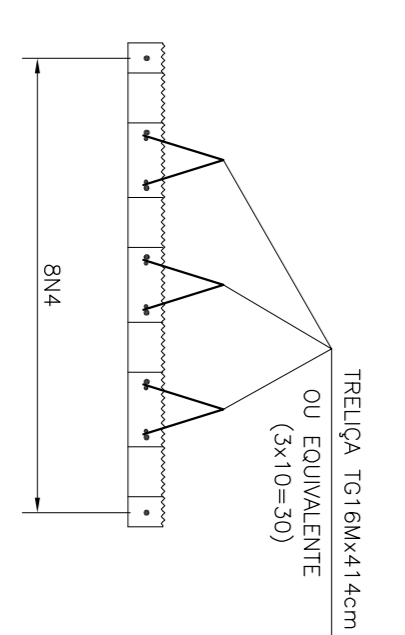
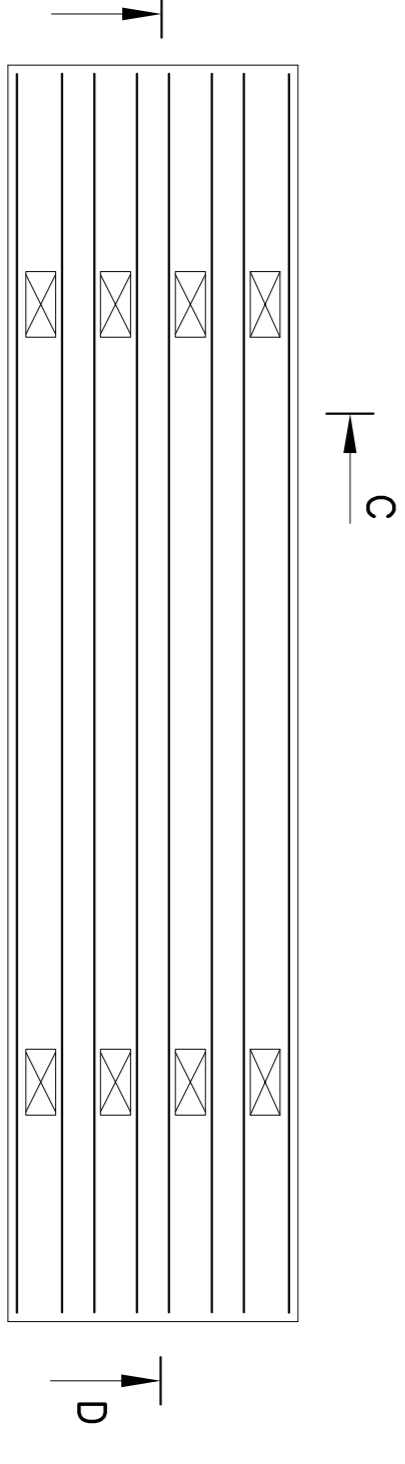
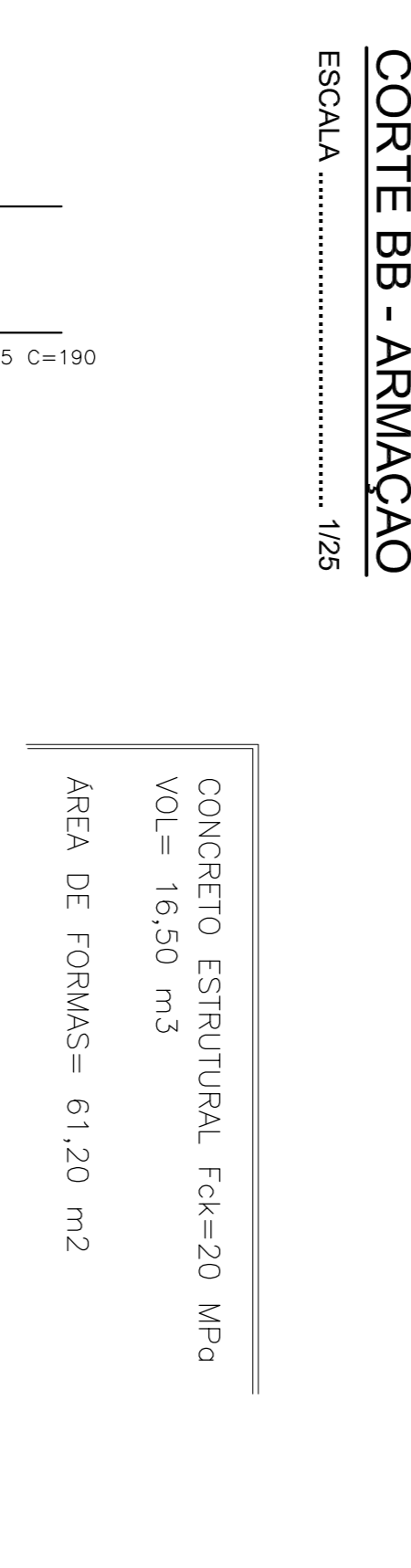
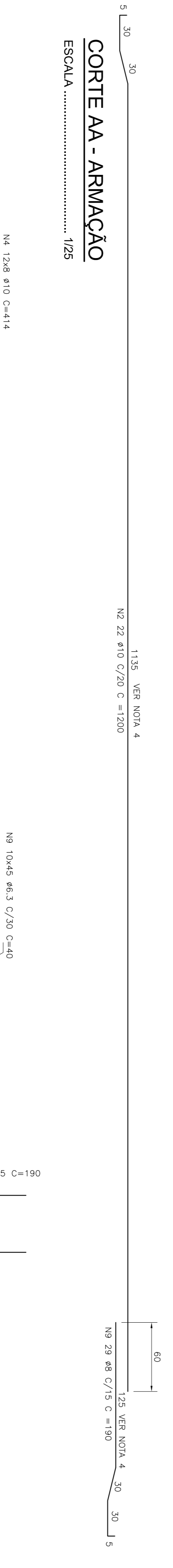
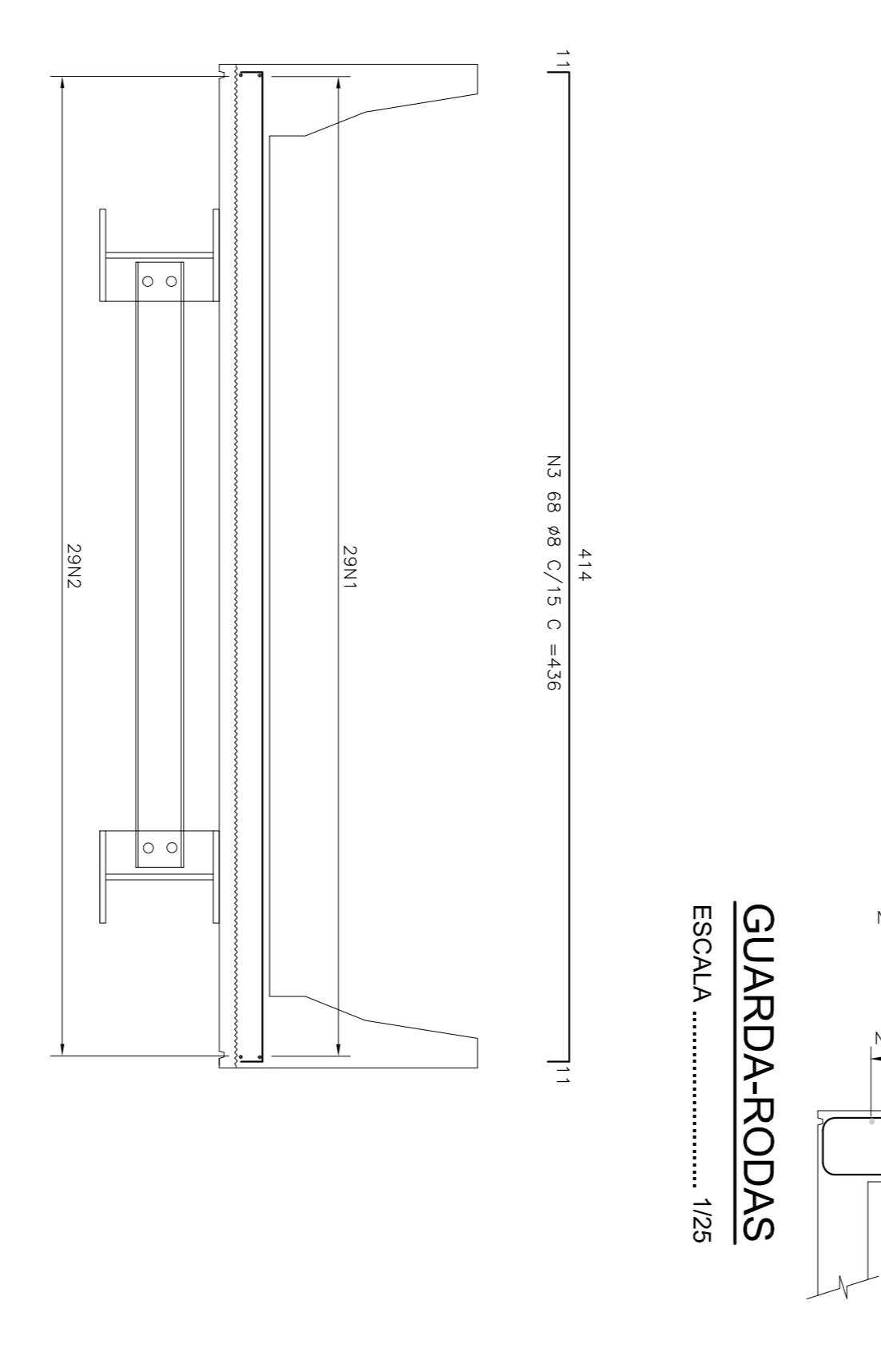
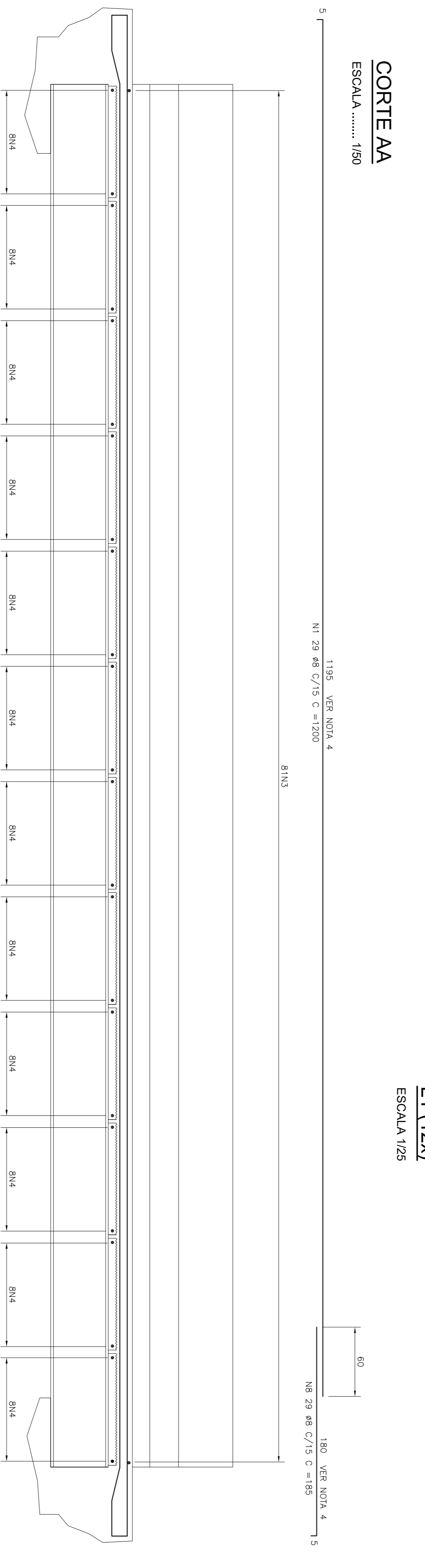
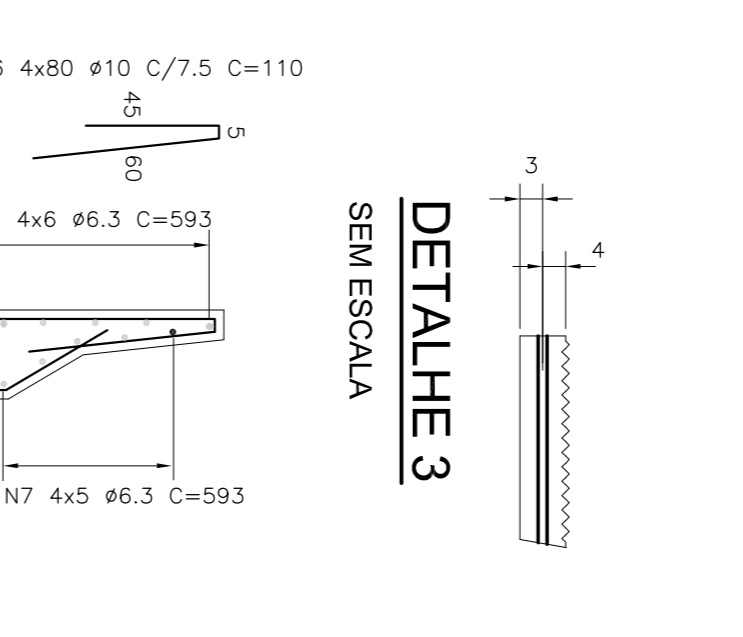
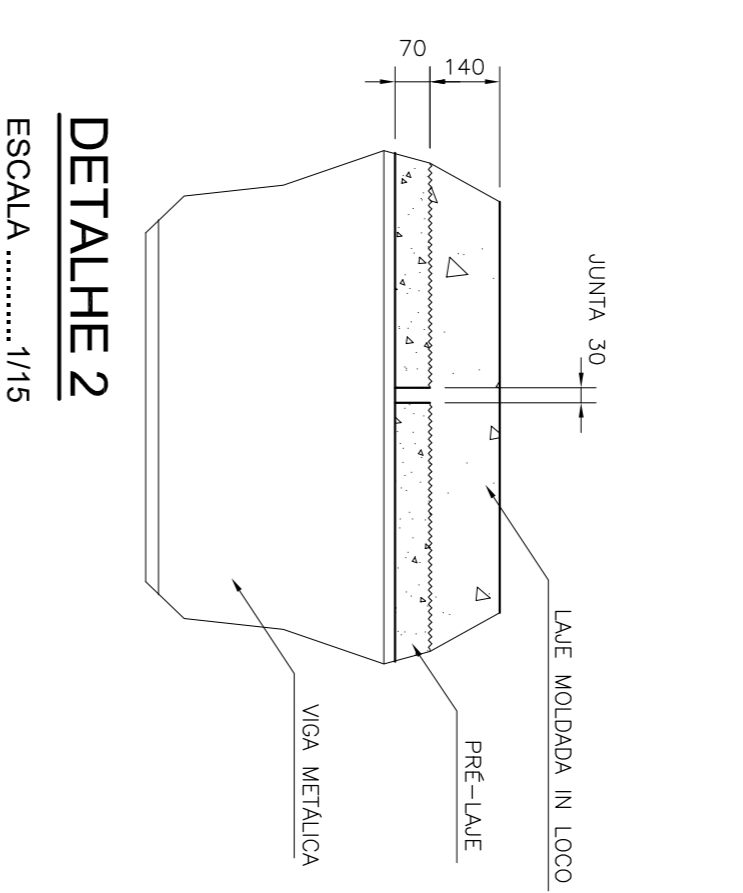
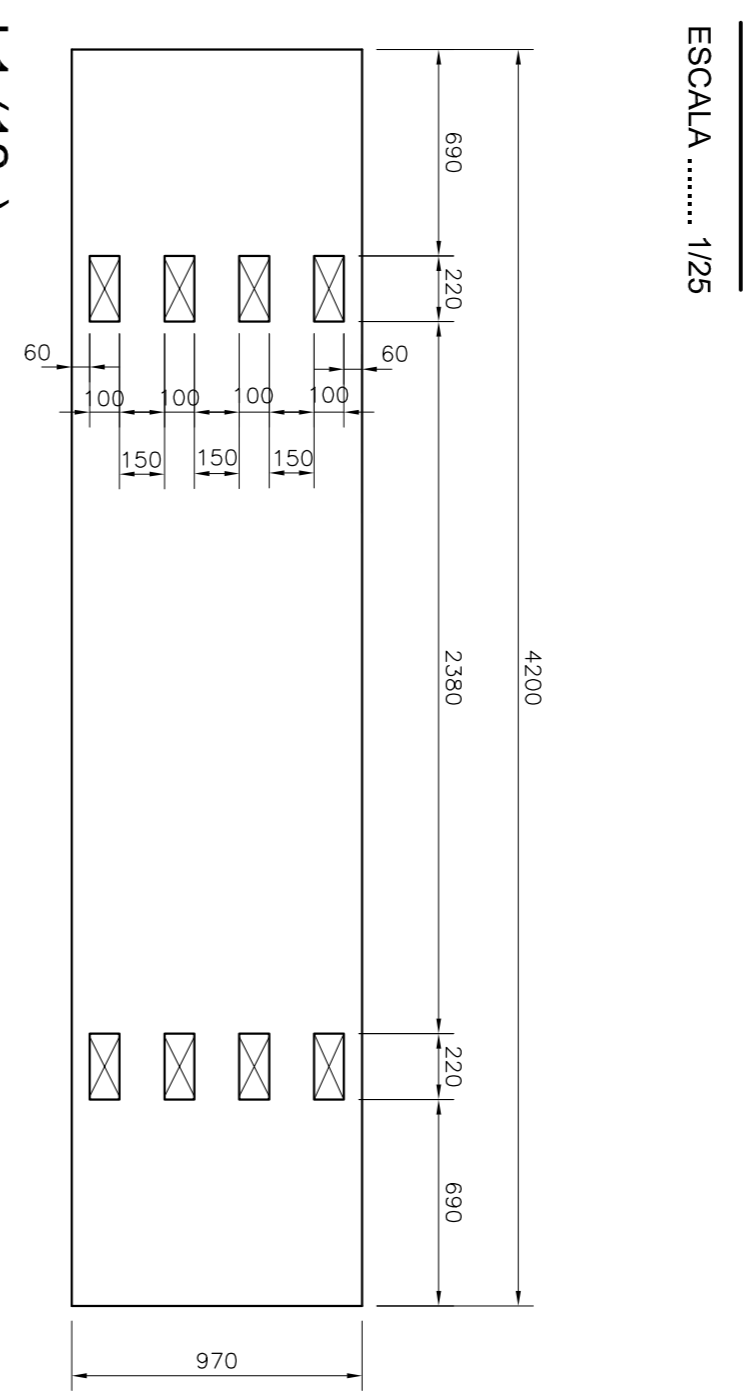
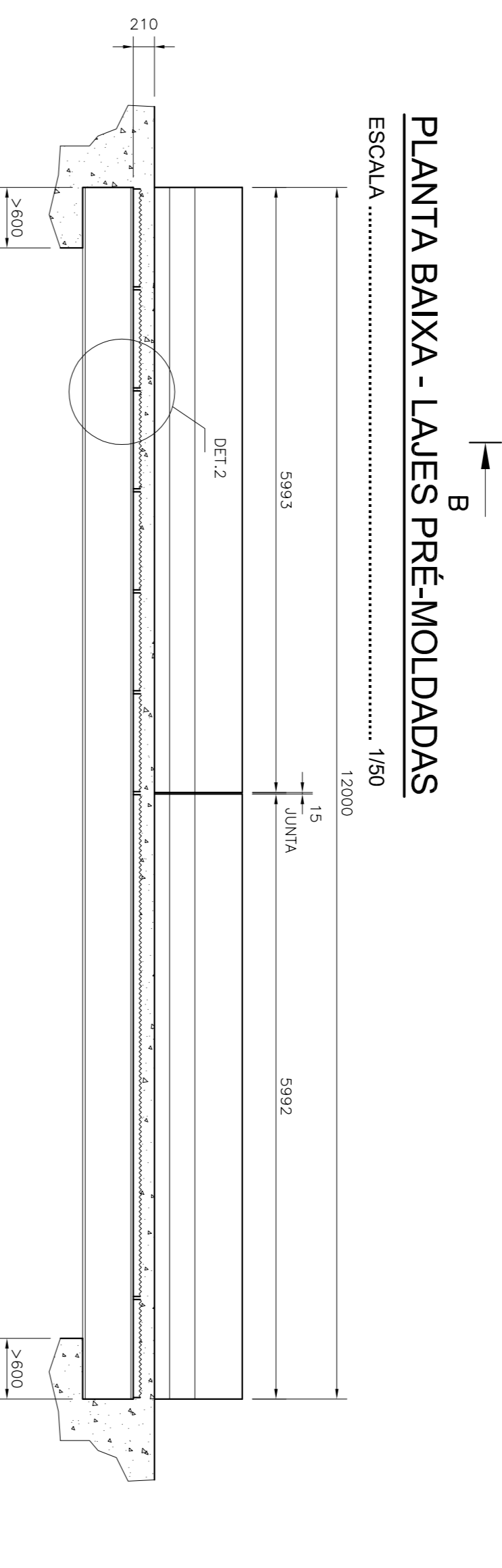


LISTA DE FERROS
AÇO CA-50 A

POS.	Ø	Q	COMPRIMENTO (m)	TOTAL (kg)
1	8,0	29	1200	34800
2	10,0	22	1200	26400
3	8,0	81	436	35316
4	10,0	96	414	39744
5	12,5	168	190	31920
6	10,0	320	110	35200
7	6,3	44	593	26092
8	6,3	137	414	56718
9	6,3	569	40	22760
TOTAL				1502,06

RESUMO GERAL

Ø (mm)	COMPR. (m)	PESO (kg/m)	TOTAL (kg)
6,3	1055,70	0,29	283,93
8	701,16	0,40	280,46
10	1013,44	0,63	638,47
12,5	319,20	1,00	319,20
TOTAL			1502,06



NOTAS:

- LAJE DIMENSIONADA PARA TREM TIPO 4500;
- COBRIMENTO DE 3,0cm
- DIMENSÕES DE FORMAS E Ø DAS BARRAS EXPRESSAS EM "mm", ARMAÇÃO EM "cm", EXCETO ONDE INDICADO.
- ALTERNAR EMBENDAS

SECRETARIA DE TRANSPORTES E OBRAS PÚBLICAS DO ESTADO DE MINAS GERAIS

IDENTIFICAÇÃO	PROJETO PADRÃO
00000	PONTES - PONTE DE 12,0m
CONTÉUDO	PROJETO TABULEIRO PRÉ-MOLDADO
02/02	PLANTA BAIXA, CORTES, DETALHES E LISTA DE FERROS

REV.	DATA	DESCRIÇÃO DO TRABALHO E/OU REVISÃO
1	24/06/09	FORMATAÇÃO PADRÃO SETOR - CONFORME ORIGINAL ENVIADO PELA TACONO
0		EMISSÃO INICIAL

CONCRETO ESTRUTURAL F_{ck}=20 MPa
VOL= 16,50 m³
ÁREA DE FORMAS= 61,20 m²